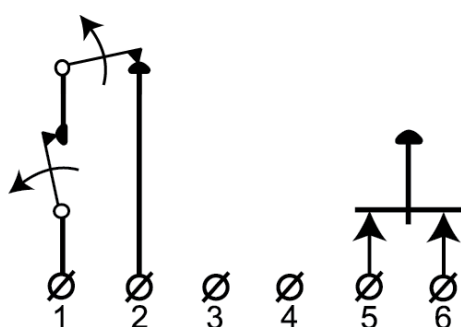


MC 470

High Security Contact,
Surface mount, NC

Technical data

| | |
|-----------------------------------|---|
| Installation method | Surface mount |
| Contact function | Normally Closed (NC) |
| Approvals | EN 50131-2-6 Grade 3, Class II, INCERT B-582-1003, SBSC 9-201, Class 3/4, F&P, FG, NBÜ CZ Typ 3, NBÜ SK Typ 3 |
| Contact rating | 48 VDC / 500 mA / 10 VA |
| Magnet type | Alnico 5 |
| Mounting on steel | Only with accessories |
| Make distance (wood) mm | 27 |
| Make distance (steel) mm | 10 |
| Connection | Screw terminals |
| Housing material | ABS Plastic |
| Operating temperature range | -40°C - +70°C |
| Housing protection class | IP 43 |
| Contact dimensions (L x W x H) mm | 65 x 20 x 15 |
| Magnet dimensions (L x W x H) mm | 65 x 14 x 10 |
| Normal operation | 12 VDC |
| Grade | 3 |



MC 470 is a surface mount high security contact with NC function with 6 screw connections and sabotage contact. The contact is specially designed for use in banks, museums, art galleries, stores, etc. It has screw terminals with wire protection and a sabotage contact. Enclosed are plastic spacers for installation on steel. The contact can be supplemented with different accessories such as brackets and extra strong magnets.

ORDERING INFORMATION

| Model | Description |
|--------|--|
| MC 470 | High security contact, NC, surface mount |